

## LED Pixel Point Light

LED point light sources are widely used in the field of landscape lighting. They have saturated colors and uniform color mixing, and can perfectly present different color effects. When the building facade is laid on a large scale, it can be combined into a dot matrix screen and combined with an intelligent control system to achieve large-scale linkage and various patterns, animations, and text effects

# XS30 LED pixel point light



## Electrical & output data

Item No.	Power	Color	LED Qty	Control method
XS30W3D2	0.9W	3000K/4000K/5700K	3*0.3W 3535	ON/OFF
XS30F3D2A	0.75W	RGB	3*0.25W 3535	DMX512
XS30F3D2B	0.9W	RGBW	3*0.3W 3535	DMX512

## Installation Indication

Residential buildings, commercial properties, office buildings, museums, religious buildings, industrial parks, bridges, villas, parks, etc.

Voltage	DC24V
Size	L47*W34*H14mm
Housing Material	PC
Warranty	5 Years
Beam Angle	110°
CRI	>80
SDCM	<5
Ambient temperature	Tamin=-20 °C , Tamax=55 °C
Luminous efficiency	WHITE 80lm/w ,RGBW 40lm/w
RH	3C~80%



One bin



Class III



High Grayscale



CE



IP66



DMX512

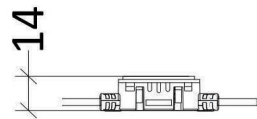
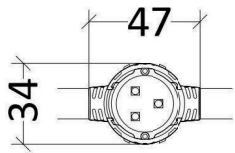


Outdoor

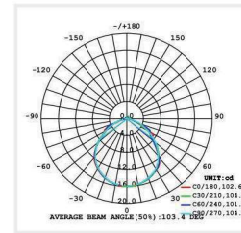


IK 06

## Dimension



## Distribution curve flux

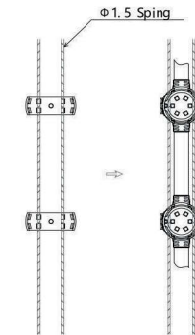


## Product Features

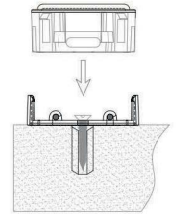
- ※ Double-layer waterproof, IP66 grade;
- ※ Adopt high-quality LED, high color rendering, high brightness, and uniform color;
- ※ The lamp body is made of high-quality PC material, which is UV-resistant, corrosion-resistant, non-discoloring, and has high light transmittance;
- ※ Waterproof male and female connectors, simple wiring;
- ※ Standard DMX512 protocol, strong compatibility

## Install Node

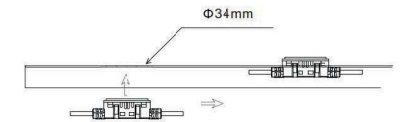
Installation method 1



Installation method 2



Installation method 3



# XS40 LED pixel point light



## Electrical & output data

Item No.	Power	Color	LED Qty	Control method
XS40W6D2	1.2W	3000K/4000K/5700K	6*0.2W 3535	0N/0FF
XS40F6D2	1.2W	RGB	6*0.2W 3535	DMX512
XS40F8D2	1.8W	RGBW	8*0.2W 3535	DMX512

## Installation Indication

Residential buildings, commercial properties, office buildings, museums, religious buildings, industrial parks, bridges, villas, parks, etc.

Voltage	DC24V
Size	L55*W42*H16mm
Housing Material	PC
Warranty	5 Years
Beam Angle	110°
CRI	>80
SDCM	<5
Ambient temperature	Tamin=-20 °C , Tamax=55 °C
Luminous efficiency	WHITE 80lm/w ,RGBW 40lm/w
RH	3C~80%



One bin



Class III



High Grayscale



CE



IP66



DMX512

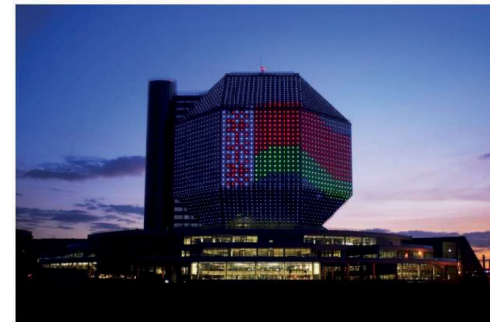
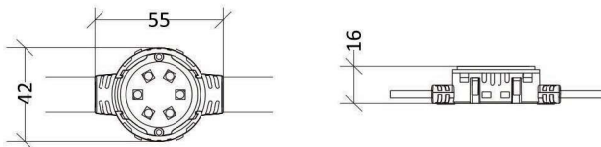


Outdoor

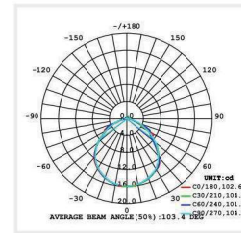


IK 06

## Dimension



## Distribution curve flux

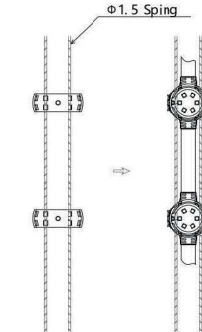


## Product Features

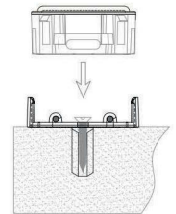
- ※ Double-layer waterproof, IP66 grade;
- ※ Adopt high-quality LED, high color rendering, high brightness, and uniform color;
- ※ The lamp body is made of high-quality PC material, which is UV-resistant, corrosion-resistant, non-discoloring, and has high light transmittance;
- ※ Waterproof male and female connectors, simple wiring;
- ※ Standard DMX512 protocol, strong compatibility

## Install Node

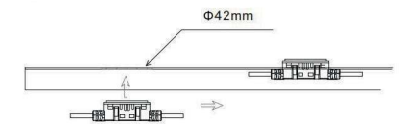
Installation method 1



Installation method 2



Installation method 3



# XS100 LED pixel point light



## Electrical & output data

Item No.	Power	Color	LED Qty	Control method
XS100W18D2	5W	3C00K/4000K/5700K	18*0.3W 2835	ON/OFF
XS100F18D2	5W	RGBW	18*0.3W 5050	DMX512
XS110W18D2	5W	3C00K/4000K/5700K	18*0.3W 2835	ON/OFF
XS110F18D2	5W	RGBW	18*0.3W 5050	DMX512

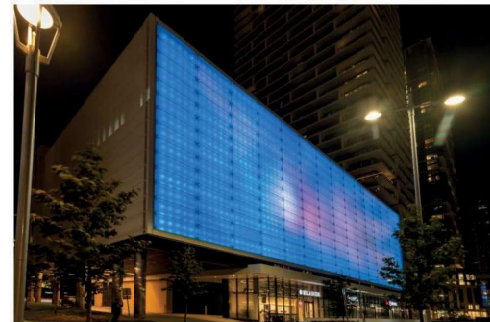
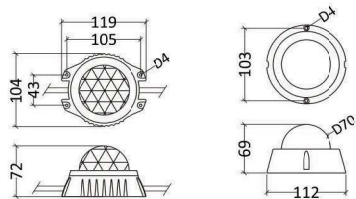
## Installation Indication

Residential buildings, commercial properties, office buildings, museums, religious buildings, industrial parks, bridges, villas, parks, etc.

Voltage	DC24V
Size	L119*W104*H72mm L112*W112*H69mm
Housing Material	ADC12+ Glass Cover ADC12+ PC Cover
Warranty	5 Years
Beam Angle	110°/130°
CRI	>80
SDCM	<5
Ambient temperature	Tamin=-20 °C , Tamax=55 °C
Luminous efficiency	WHITE 80lm/w ,RGBW 40lm/w
RH	3C~80%



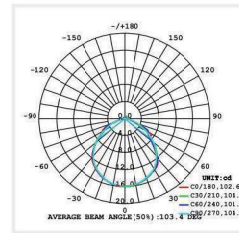
## Dimension



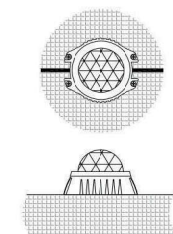
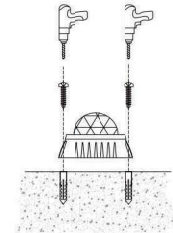
## Product Features

- ※ Double-layer waterproof, IP66 grade;
- ※ Adopt high-quality LED, high color rendering, high brightness, and uniform color;
- ※ The lamp body is made of high-quality PC material, which is UV-resistant, corrosion-resistant, non-discoloring, and has high light transmittance;
- ※ Waterproof male and female connectors, simple wiring;
- ※ Standard DMX512 protocol, strong compatibility

## Distribution curve flux



## Install Node



# XS200 LED pixel point light



### Electrical & output data

Item No.	Power	Color	LED Qty	Control method
XS200W15D2	15W	3000K/4000K/5700K	15*1W 3030	ON/OFF
XS200F18D2	20W	RGBW	18*1.5W 5050	DMX512

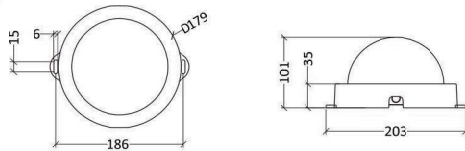
### Installation Indication

Residential buildings, commercial properties, office buildings, museums, religious buildings, industrial parks, bridges, villas, parks, etc.

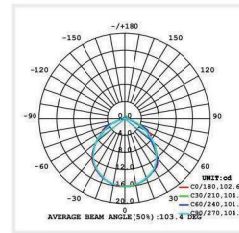
Voltage	DC24V
Size	L203*W179*H101mm
Housing Material	ADC12+ Transparent PC Cover ADC12+ Milk white PC Cover
Warranty	5 Years
Beam Angle	110°/130°
CRI	>80
SDCM	<5
Ambient temperature	Tamin=-20 °C , Tamax=55 °C
Luminous efficiency	WHITE 80lm/w ,RGBW 40lm/w
RH	3C~80%



### Dimension



### Distribution curve flux



### Product Features

- ※ Double-layer waterproof, IP66 grade;
- ※ Adopt high-quality LED, high color rendering, high brightness, and uniform color;
- ※ The lamp body is made of high-quality PC material, which is UV-resistant, corrosion-resistant, non-discoloring, and has high light transmittance;
- ※ Waterproof male and female connectors, simple wiring;
- ※ Standard DMX512 protocol, strong compatibility

### Install Node

