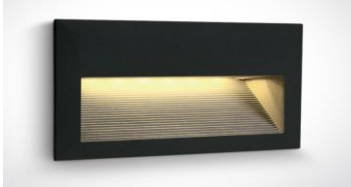


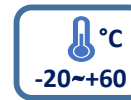
LED Staire Light / ECO1 Series



Applications: Staircase Lighting In Residential and Office Building

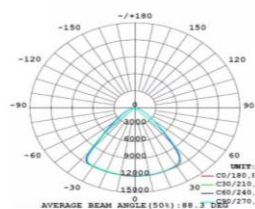
Features:

- Decorative, & Attractive Shape,
- Comfortable soft light,
- High Durability and
- Long Life Time



Item No.	Power	Supply	Efficacy	Beam	CCT	Size
STR10W3000ECO	10W	220-240VAC	90 Lm/W	120°	3000K	
STR10W3000ECO	10W	220-240VAC	90 Lm/W	120°	4000K	
STR10W3000ECO	10W	220-240VAC	90 Lm/W	120°	3000K	
STR10W3000ECO	15W	220-240VAC	90 Lm/W	120°	4000K	
STR10W3000ECO	15W	220-240VAC	90 Lm/W	120°	3000K	
STR10W3000ECO	15W	220-240VAC	90 Lm/W	120°	4000K	
STR10W3000ECO	15W	220-240VAC	90 Lm/W	120°	3000K	
STR10W3000ECO	20W	220-240VAC	90 Lm/W	120°	3000K	
STR10W3000ECO	20W	220-240VAC	90 Lm/W	120°	4000K	
STR10W3000ECO	20W	220-240VAC	90 Lm/W	120°	3000K	

Distribution



h. Drawing